

# Cliff Lodge Homes

Resort Retirement Living

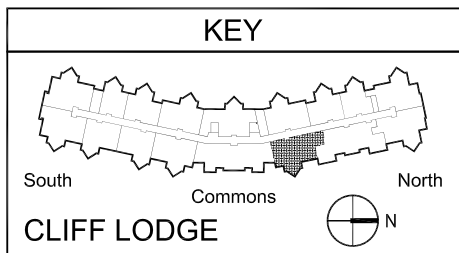
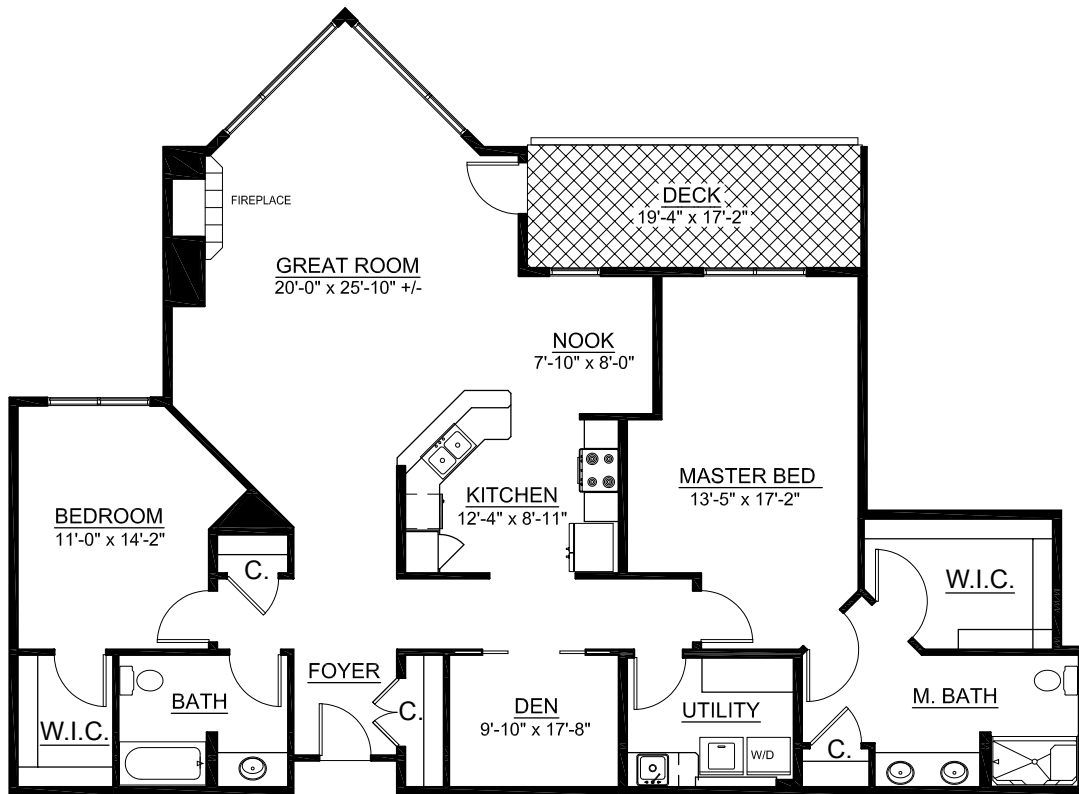
## Plan J

1,825 sq. ft.

2 Bedroom | Den | 2 Bath

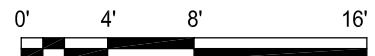


For illustration purposes only. Square footage, actual room sizes, and features may vary. See construction documents.



### HOMES

- 392
- 484



## Touchmark at Mt. Bachelor Village

19800 SW Touchmark Way | Bend, OR 97702 | 541-383-1414 | 888-231-1113 | TouchmarkBend.com

