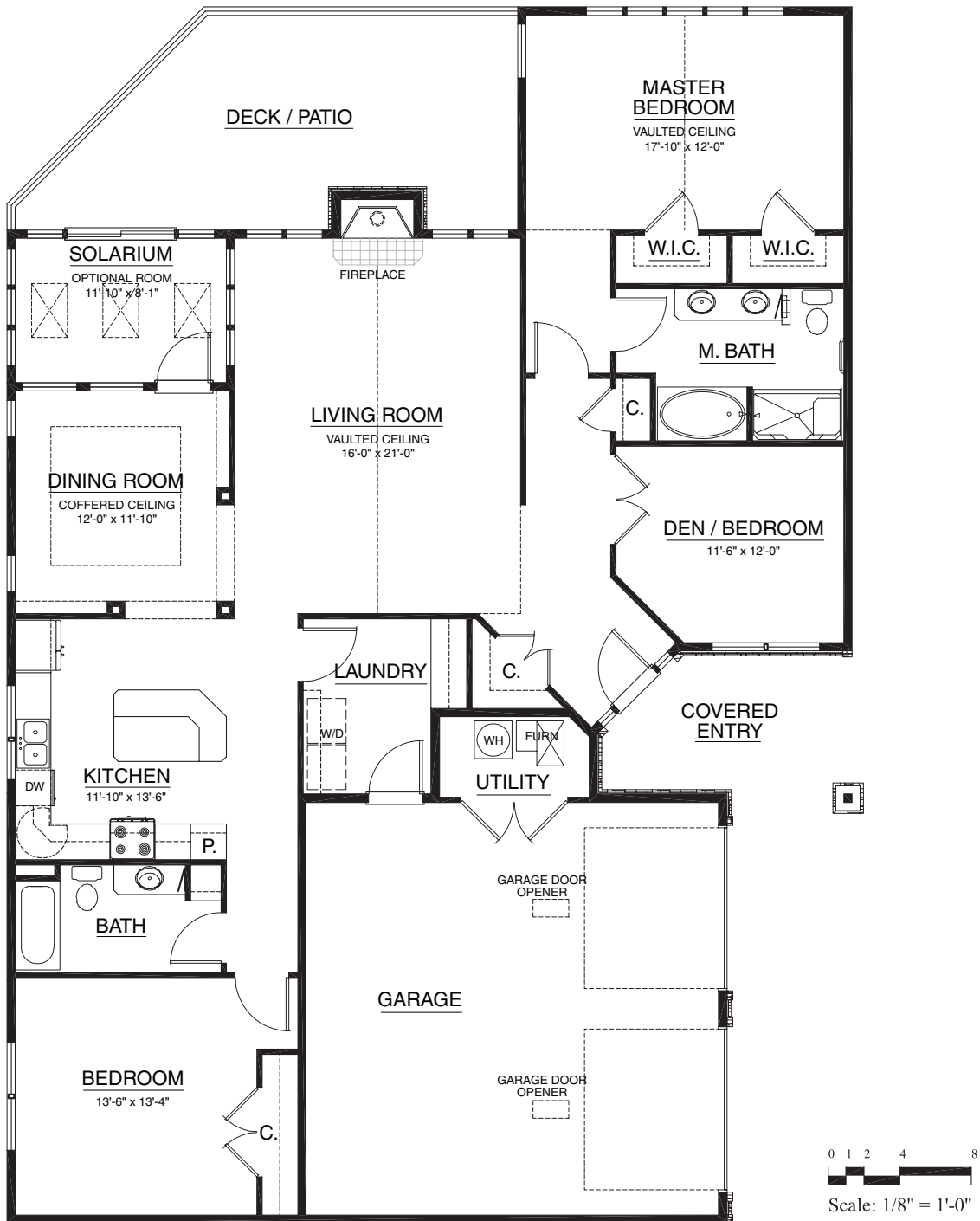


Cottages

The Truman
Main 1,978 sq. ft. • Garage 620 sq. ft.
3 Bedroom | 2 Bath



For illustration purposes only. Square footage, actual room sizes, and features may vary. See construction documents.



Touchmark at Mt. Bachelor Village

19800 SW Touchmark Way | Bend, OR 97702 | 541-383-1414 | 888-231-1113 | TouchmarkBend.com

